

# Avex® 1604

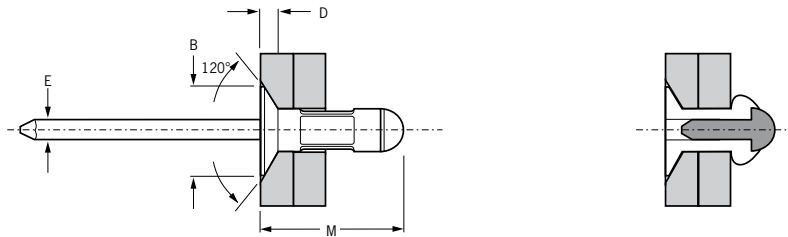


For installation information please refer to the tooling overview and manuals on our website [www.avdel-global.com](http://www.avdel-global.com).  
 Pour les conditions de pose, merci de vous référer à la description de l'outil et aux manuels disponibles sur notre site Web.  
 Angaben zur Verarbeitung entnehmen Sie bitte der Geräteübersicht und den Betriebsanleitungen auf unserer Website.  
 Per informazioni sull'installazione preghiamo consultare i manuali e la panoramica degli attrezzi sul nostro sito web.  
 Para ver información sobre máquinas de colocación, consulte nuestra página web, apartados visión general de máquinas y manuales.

English	Français	Deutsch	Italiano	Español
120° Countersunk head	120° Tête fraisée	120° Senkkopf	120° Testa svasata	120° Cabeza avellanada
Body: Aluminium alloy* (2.5 % Mg) Natural	Corps: Alliage d'aluminium* (2.5% Mg) Brut	Hülse: Aluminium* (2.5 % Mg) Blank	Corpo: Lega di alluminio* (2.5% Mg) Nessuna finitura	Cuerpo: Aluminio* (2.5% Mg) Natural
Stem: Low carbon steel**	Tige: Acier bas carbone**	Dorn: Stahl**	Gambo: Acciaio a basso tenore di carbonio**	Vástago: Acero bajo en carbono**
Zinc coated	Revêtement zingué	Verzinkt	Zincato	Zincado

\*: AA 5052, DIN 1725, AlMg2.5, Werkstoff 3.3523

\*\* : BS3111 Type 0, SAE 1015/1018/1022, DIN 1654, Cq15/Cq22



Ø	[Cross-section diagram]		[Thread diagram]		M	B	D	E	[Torque diagram]	[Torque diagram]	Part No/ref
	min.	max.	min.	max.							
3.2 (1/8")	2.4	6.3	3.3	3.4	12.2	5.5	1.3	1.8	0.7	0.9	01604-00412
	4.0	7.9			13.4						01604-00414
	5.5	9.5			14.8						01604-00416
4.0 (5/32")	2.8	7.9	4.1	4.2	14.3	6.5	1.4	2.2	1.1	1.3	01604-00514
	3.6	8.8			15.1						01604-00515
4.8 (3/16")	3.2	7.9	4.9	5.0	15.5	9.0	1.8	2.9	1.5	2.3	01604-00615
	6.3	12.7			20.4						01604-00621

all dimensions in mm / en millimètre / alle Maße in mm / in millimetri / en milímetros

1) typical values / valeurs moyennes / typische Werte / Valori tipici / resistencias máximas recomendadas

## AVDEL

[www.avdel-global.com](http://www.avdel-global.com)

© 2010 Infastech

Avex® is a trademark of Avdel UK Limited

03a.2007

Data shown is subject to change without prior notice as a result of continuous product development and improvement policy.  
 Your local Avdel representative is at your disposal should you need to confirm latest information.

# Avex® 1641

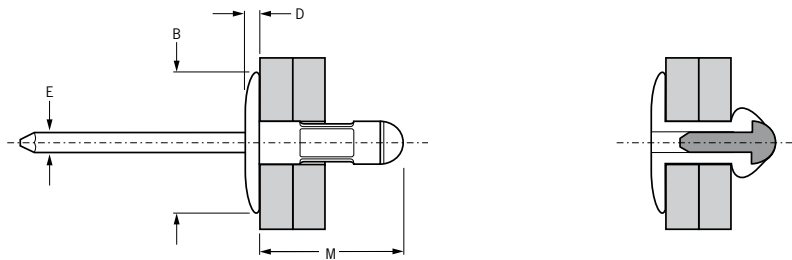
For installation information please refer to the tooling overview and manuals on our website [www.avdel-global.com](http://www.avdel-global.com).  
 Pour les conditions de pose, merci de vous référer à la description de l'outil et aux manuels disponibles sur notre site Web.  
 Angaben zur Verarbeitung entnehmen Sie bitte der Geräteübersicht und den Betriebsanleitungen auf unserer Website.  
 Per informazioni sull'installazione preghiamo consultare i manuali e la panoramica degli attrezzi sul nostro sito web.  
 Para ver información sobre máquinas de colocación, consulte nuestra página web, apartados visión general de máquinas y manuales.



English	Français	Deutsch	Italiano	Español
Large Flange	Tête large	Flachrundkopf extragroß	Testa larga	Cabeza ancha
Body: Aluminium alloy* (2.5 % Mg) Natural	Corps: Alliage d'aluminium* (2.5% Mg) Brut	Hülse: Aluminium* (2.5 % Mg) Blank	Corpo: Lega di alluminio* (2.5% Mg) Nessuna finitura	Cuerpo: Aluminio* (2.5% Mg) Natural
Stem: Low carbon steel**	Tige: Acier bas carbone**	Dorn: Stahl**	Gambo: Acciaio a basso tenore di carbonio**	Vástago: Acero bajo en carbono**
Zinc coated	Revêtement zingué	Verzinkt	Zincato	Zincado

\*: AA 5052, DIN 1725, AlMg2.5, Werkstoff 3.3523

\*\* : BS3111 Type 0, SAE 1015/1018/1022, DIN 1654, Cq15/Cq22



Ø					M	B	D	E			Part No/ref
	nom.	min.	max.	min.							
4.8 (3/16")	1.6	6.3	4.9	5.0	13.9	16.2	2.2	2.9	1.5	2.1	01641-00613
	3.2	9.3			17.0				1.3		01641-00617
	4.8	11.1			18.7				1.3		01641-00619
	6.4	12.7			20.2				1.3		01641-00621
	12.7	19.8			28.2				1.4		01641-00631

all dimensions in mm / en millimètre / alle Maße in mm / in millimetri / en milímetros

1) typical values / valeurs moyennes / typische Werte / Valori tipici / resistencias máximas recomendadas

## AVDEL

[www.avdel-global.com](http://www.avdel-global.com)

© 2010 Infastech

Avex® is a trademark of Avdel UK Limited

03b.2007

Data shown is subject to change without prior notice as a result of continuous product development and improvement policy.  
 Your local Avdel representative is at your disposal should you need to confirm latest information.

# Avex® 1643

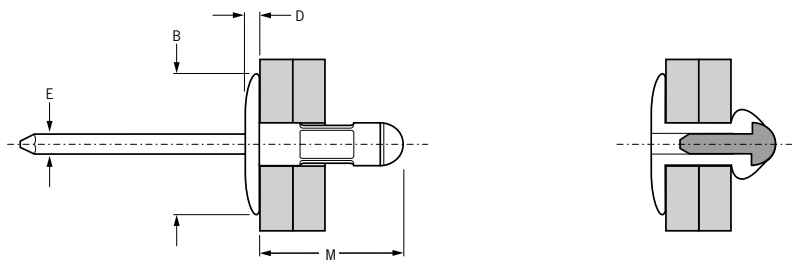
For installation information please refer to the tooling overview and manuals on our website [www.avdel-global.com](http://www.avdel-global.com).  
 Pour les conditions de pose, merci de vous référer à la description de l'outil et aux manuels disponibles sur notre site Web.  
 Angaben zur Verarbeitung entnehmen Sie bitte der Geräteübersicht und den Betriebsanleitungen auf unserer Website.  
 Per informazioni sull'installazione preghiamo consultare i manuali e la panoramica degli attrezzi sul nostro sito web.  
 Para ver información sobre máquinas de colocación, consulte nuestra página web, apartados visión general de máquinas y manuales.



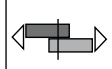



English	Français	Deutsch	Italiano	Español
Large Flange	Tête large	Flachrundkopf extragroß	Testa larga	Cabeza ancha
Body: Aluminium alloy* (2.5 % Mg) Natural	Corps: Alliage d'aluminium* (2.5% Mg) Brut	Hülse: Aluminium* (2.5 % Mg) Blank	Corpo: Lega di alluminio* (2.5% Mg) Nessuna finitura	Cuerpo: Aluminio* (2.5% Mg) Natural
Stem: Stainless steel** Natural	Tige: Inox** Brut	Dorn: Edelstahl** Blank	Gambo: Acciaio inox** Nessuna finitura	Vástago: Acero inoxidable** Natural

\*: AA 5052, DIN 1725, AlMg2.5, Werkstoff 3.3523

\*\* : BS3111, 321S31, AISI 321, Werkstoff 1.4541



ø					M	B	D	E	 kN <sup>1)</sup>	 kN <sup>1)</sup>	Part No/ref
	nom.	min.	max.	min.							
4.8 (3/16")	1.6	6.3	4.9	5.0	13.6	16.2	2.2	2.9	1.4	2.0	01643-00613
	6.4	12.7			19.7				1.2		01643-00621
	12.7	19.8			27.6				1.3		01643-00631

all dimensions in mm / en millimètre / alle Maße in mm / in millimetri / en milímetros

1) typical values / valeurs moyennes / typische Werte / Valori tipici / resistencias máximas recomendadas

# Avex® 1661

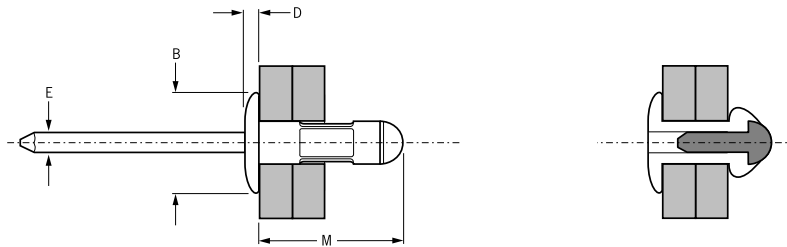
For installation information please refer to the tooling overview and manuals on our website [www.avdel-global.com](http://www.avdel-global.com).  
 Pour les conditions de pose, merci de vous référer à la description de l'outil et aux manuels disponibles sur notre site Web.  
 Angaben zur Verarbeitung entnehmen Sie bitte der Geräteübersicht und den Betriebsanleitungen auf unserer Website.  
 Per informazioni sull'installazione preghiamo consultare i manuali e la panoramica degli attrezzi sul nostro sito web.  
 Para ver información sobre máquinas de colocación, consulte nuestra página web, apartados visión general de máquinas y manuales.



English	Français	Deutsch	Italiano	Español
Dome head	Tête plate	Flachrundkopf	Testa tonda	Cabeza alomada
Body: Aluminium alloy* (2.5 % Mg)	Corps: Alliage d'aluminium* (2.5% Mg)	Hülse: Aluminium* (2.5 % Mg)	Corpo: Lega di alluminio* (2.5% Mg)	Cuerpo: Aluminio* (2.5% Mg)
Natural	Brut	Blank	Nessuna finitura	Natural
Stem: Low carbon steel**	Tige: Acier bas carbone**	Dorn: Stahl**	Gambo: Acciaio a basso tenore di carbonio**	Vástago: Acero bajo en carbono**
Zinc coated	Revêtement zingué	Verzinkt	Zincato	Zincado

\*: AA 5052, DIN 1725, AlMg2.5, Werkstoff 3.3523

\*\* : BS3111 Type 0, SAE 1015/1018/1022, DIN 1654, Cq15/Cq22



Ø	[Cross-section diagram]		[Thread diagram]		M	B	D	E	[Torque diagram]	[Torque diagram]	Part No/ref
	min.	max.	min.	max.							
3.0	0.8	4.3	3.1	3.3	9.1	6.7	1.3	1.7	0.7	0.9	01661-05307
3.2 (1/8")	0.8	4.8	3.3	3.4	10.4	6.7	1.3	1.8	0.7	1.0	01661-00410
	1.2	6.3			12.0						01661-00412
	4.0	7.9			13.6						01661-00414
	5.5	9.5			16.0						01661-00416
4.0 (5/32")	0.5	3.2	4.1	4.2	9.3	8.2	1.6	2.2	1.1	1.6	01661-00508
	0.8	4.7			10.7						01661-00510
	1.2	6.3			12.5						01661-00512
	4.0	9.5			16.2						01661-00516
	6.4	12.7			19.6						01661-00521
4.8 (3/16")	1.6	6.3	4.9	5.0	13.9	10.1	1.8	2.9	1.5	2.3	01661-00613
	4.8	11.1			18.7						01661-00619
	4.8	12.7			20.2						01661-00621
	12.7	19.8			28.2						01661-00631
6.4 (1/4")	1.5	8.3	6.6	6.9	16.8	13.5	2.7	4.0	3.1	2.5	01610-04506 <sup>2)</sup>

all dimensions in mm / en millimètre / alle Maße in mm / in millimetri / en milímetros

1) typical values / valeurs moyennes / typische Werte / Valori tipici / resistencias máximas recomendadas

2) stem: zinc plated, clear trivalent passivated / tige: revêtement zingué, passivation claire trivalente / Dorn: verzinkt, klar chromatiert Cr6-frei/  
 gambo: zincato, passivazione chiara trivalente / vástago: zincado, pasivado claro trivalente

[www.avdel-global.com](http://www.avdel-global.com)

© 2010 Infastech

Avex® is a trademark of Avdel UK Limited

06a.2007

Data shown is subject to change without prior notice as a result of continuous product development and improvement policy.  
 Your local Avdel representative is at your disposal should you need to confirm latest information.

# Avex® 1663

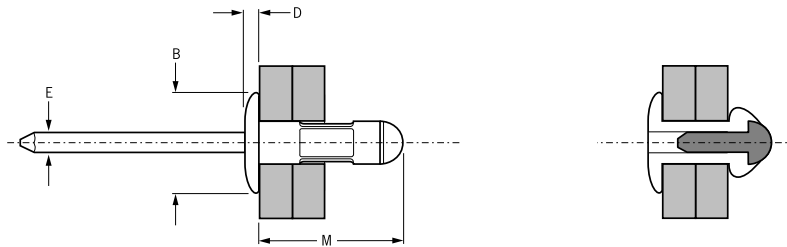


For installation information please refer to the tooling overview and manuals on our website [www.avdel-global.com](http://www.avdel-global.com).  
 Pour les conditions de pose, merci de vous référer à la description de l'outil et aux manuels disponibles sur notre site Web.  
 Angaben zur Verarbeitung entnehmen Sie bitte der Geräteübersicht und den Betriebsanleitungen auf unserer Website.  
 Per informazioni sull'installazione preghiamo consultare i manuali e la panoramica degli attrezzi sul nostro sito web.  
 Para ver información sobre máquinas de colocación, consulte nuestra página web, apartados visión general de máquinas y manuales.

English	Français	Deutsch	Italiano	Español
Dome head	Tête plate	Flachrundkopf	Testa tonda	Cabeza alomada
Body: Aluminium alloy* (2.5 % Mg) Natural	Corps: Alliage d'aluminium* (2.5% Mg) Brut	Hülse: Aluminium* (2.5 % Mg) Blank	Corpo: Lega di alluminio* (2.5% Mg) Nessuna finitura	Cuerpo: Aluminio* (2.5% Mg) Natural
Stem: Stainless steel** Natural	Tige: Inox** Brut	Dorn: Edelstahl** Blank	Gambo: Acciaio inox** Nessuna finitura	Vástago: Acero inoxidable** Natural

\*: AA 5052, DIN 1725, AlMg2.5, Werkstoff 3.3523

\*\* : ø 3.0 - 4.0: X5CrNi 18-10, Werkstoff 1.4301; ø 4.8: X3CrNiCu 18-9-4, Werkstoff 1.4567



ø	Ø		W		M	B	D	E	kN <sup>1)</sup>	kN <sup>1)</sup>	Part No/ref
	min.	max.	min.	max.							
3.0	0.8	4.3	3.1	3.3	9.1	6.7	1.3	1.7	0.7	0.9	01663-05307
3.2 (1/8")	0.8	4.8	3.3	3.4	10.4	6.7	1.3	1.8	0.7	1.0	01663-00410
	1.2	6.3			12.0						01663-00412
	4.0	7.9			13.6						01663-00414
	5.5	9.5			16.0						01663-00416
4.0 (5/32")	0.5	3.2	4.1	4.2	9.3	8.2	1.6	2.2	1.0	1.6	01663-00508
	0.8	4.7			10.7						01663-00510
	1.2	6.3			12.5						01663-00512
	4.0	9.5			16.2						01663-00516
	6.4	12.7			19.6						01663-00521
4.8 (3/16")	1.6	6.3	4.9	5.0	13.9	10.1	1.8	2.9	1.3	2.3	01663-00613
	4.8	11.1			18.7						01663-00619
	4.8	12.7			20.2						01663-00621
	12.7	19.8			28.2						01663-00631

all dimensions in mm / en millimètre / alle Maße in mm / in millimetri / en milímetros

1) typical values / valeurs moyennes / typische Werte / Valori tipici / resistencias máximas recomendadas

## AVDEL

[www.avdel-global.com](http://www.avdel-global.com)

© 2010 Infastech, Rev. 05.2012

Avex® is a trademark of Avdel UK Limited

Data shown is subject to change without prior notice as a result of continuous product development and improvement policy.  
 Your local Avdel representative is at your disposal should you need to confirm latest information.

# Avibulb® BN01

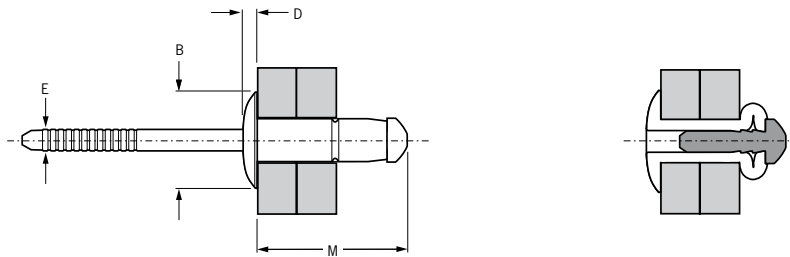


For installation information please refer to the tooling overview and manuals on our website [www.avdel-global.com](http://www.avdel-global.com).  
 Pour les conditions de pose, merci de vous référer à la description de l'outil et aux manuels disponibles sur notre site Web.  
 Angaben zur Verarbeitung entnehmen Sie bitte der Geräteübersicht und den Betriebsanleitungen auf unserer Website.  
 Per informazioni sull'installazione preghiamo consultare i manuali e la panoramica degli attrezzi sul nostro sito web.  
 Para ver información sobre máquinas de colocación, consulte nuestra página web, apartados visión general de máquinas y manuales.

English	Français	Deutsch	Italiano	Español
Dome head	Tête plate	Flachrundkopf	Testa tonda	Cabeza alomada
Body: Low carbon steel*	Corps: Acier bas carbone*	Hülse: Stahl*	Corpo: Acciaio a basso tenore di carbonio*	Cuerpo: Acero bajo en carbono*
Zinc plated	Revêtement zingué	Verzinkt	Zincato	Zincado
Clear trivalent passivated	Passivation claire trivalente	Klar chromatiert, Cr6-frei	Passivazione chiara trivalente	Pasivado claro trivalente
Stem: Medium carbon steel**	Tige: Acier au carbone**	Dorn: Stahl**	Gambo: Acciaio a medio tenore di carbonio**	Vástago: Acero medio en carbono**
Zinc plated	Revêtement zingué	Verzinkt	Zincato	Zincado
Clear trivalent passivated	Passivation claire trivalente	Klar chromatiert, Cr6-frei	Passivazione chiara trivalente	Pasivado claro trivalente

\*: BS3111 Type 0, SAE 1008, DIN 1654, QSt 34-3 / BS3111 Type 0, SAE 1015 DIN 1711, RSt 38-2, Werkstoff 1.0401

\*\* : BS3111 Type 1, SAE 1030/1037/1040/1045, Werkstoff 1.1178/1.1176/1.1186/1.1191



ø	[Diagram]		[Diagram]		M	B	D	E	[Diagram]	[Diagram]	Part No/ref
	min.	max.	min.	max.							
3.2 (1/8")	1.0	3.0	3.3	3.4	9.1	6.8	1.4	2.0	1.2	1.3	OBN01-00408
	3.0	5.0			11.7						OBN01-00411
	5.0	7.0			14.0						OBN01-00414
4.0 (5/32")	1.0	3.0	4.1	4.3	10.4	8.0	1.4	2.6	2.4	2.8	OBN01-00509
	3.0	5.0			12.9						OBN01-00512
	5.0	7.0			15.7						OBN01-00516
	7.0	9.0			18.1						OBN01-00519
4.8 (3/16")	1.5	3.5	4.9	5.1	12.1	9.6	1.5	3.2	3.6	3.8	OBN01-00611
	3.5	6.0			14.7						OBN01-00614
	6.0	8.5			17.6						OBN01-00618
6.0	1.5	4.0	6.1	6.3	14.0	12.3	2.1	4.0	4.2	5.4	OBN01-06010
	3.0	6.0			17.0						OBN01-06013
	6.0	9.0			20.0						OBN01-06016
	9.0	12.0			23.0						OBN01-06019

all dimensions in mm / en millimètre / alle Maße in mm / in millimetri / en milímetros

1) typical values / valeurs moyennes / typische Werte / Valori tipici / resistencias máximas recomendadas

2) through stem / avec tige / bei tragendem Restdorn / attraverso il gambo / con el vástago en la zona de cortadura

[www.avdel-global.com](http://www.avdel-global.com)

© 2010 Infastech

Avibulb® is a trademark of Avdel UK Limited

03.2010

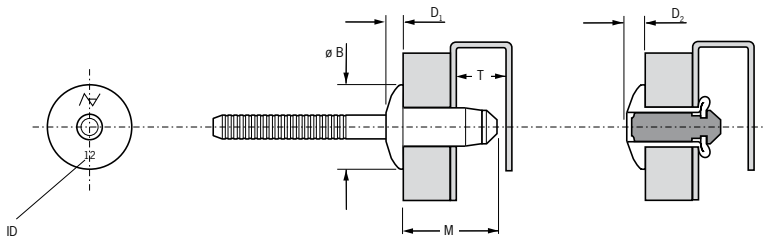
Data shown is subject to change without prior notice as a result of continuous product development and improvement policy.  
 Your local Avdel representative is at your disposal should you need to confirm latest information.

# Hemlok® 2221



For installation information please refer to the tooling overview and manuals on our website [www.avdel-global.com](http://www.avdel-global.com).  
 Pour les conditions de pose, merci de vous référer à la description de l'outil et aux manuels disponibles sur notre site Web.  
 Angaben zur Verarbeitung entnehmen Sie bitte der Geräteübersicht und den Betriebsanleitungen auf unserer Website.  
 Per informazioni sull'installazione preghiamo consultare i manuali e la panoramica degli attrezzi sul nostro sito web.  
 Para ver información sobre máquinas de colocación, consulte nuestra página web, apartados visión general de máquinas y manuales.

English	Français	Deutsch	Italiano	Español
Protruding head	Tête bombée	Flachrundkopf	Testa tonda	Cabeza alomada
Body: medium carbon steel Zinc plated Clear trivalent passivated	Corps: Acier moyen carbone Revêtement zingué Passivation claire trivalente	Hülse: Stahl Verzinkt Klar passiviert, Cr6-frei	Corpo: Acciaio a medio tenore di carbonio Zincato Passivazione chiara trivalente	Cuerpo: Acero medio en carbono Zincado Pasivado claro trivalente
Stem: medium carbon steel Zinc plated Clear trivalent passivated	Tige: Acier moyen carbone Revêtement zingué Passivation claire trivalente	Dorn: Stahl Verzinkt Klar chromatiert, Cr6-frei	Gambo: Acciaio a medio tenore di carbonio Zincato Passivazione chiara trivalente	Vástago: Acero medio en carbono Zincado Pasivado claro trivalente



ø	[Diagram]		[Diagram]		ID	M	ø B	D <sub>1</sub>	T	D <sub>2</sub>	[Diagram]	[Diagram]	Part No/ref	
	min.	max.	min.	max.										min.
6.4 (1/4")	1.50	3.50	6.7	6.9	12	13.7	13.4	2.7	12.2	3.4	10.5	8.8	02221-00812	
	2.80	4.80			13	15.0							12.0	02221-00813
	3.35	5.35			14	15.6							12.5	02221-00814
	4.80	6.80			15	17.0							12.5	02221-00815
	6.80	8.80			17	19.0							14.0	02221-00817
	7.50	9.50			18	19.7							15.0	02221-00818
	8.80	10.80			19	21.0							16.0	02221-00819
	10.80	12.80			21	23.0							16.0	02221-00821

all dimensions in mm / en millimètres / alle Maße in mm / in millimetri / en milímetros



# Hemlok® 2241

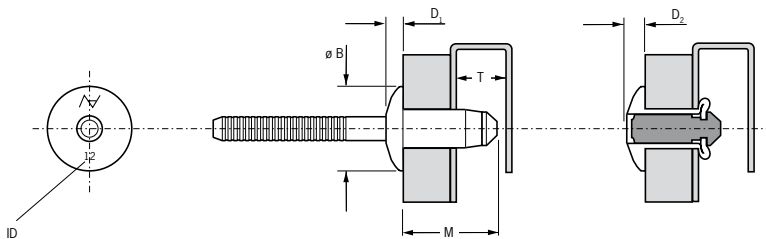


For installation information please refer to the tooling overview and manuals on our website [www.avdel-global.com](http://www.avdel-global.com).  
 Pour les conditions de pose, merci de vous référer à la description de l'outil et aux manuels disponibles sur notre site Web.  
 Angaben zur Verarbeitung entnehmen Sie bitte der Geräteübersicht und den Betriebsanleitungen auf unserer Website.  
 Per informazioni sull'installazione preghiamo consultare i manuali e la panoramica degli attrezzi sul nostro sito web.  
 Para ver información sobre máquinas de colocación, consulte nuestra página web, apartados visión general de máquinas y manuales.

English	Français	Deutsch	Italiano	Español
Protruding head	Tête bombée	Flachrundkopf	Testa tonda	Cabeza alomada
Body: Aluminium alloy* (2.5 % Mg) Natural	Corps: Alliage d'aluminium* (2.5% Mg) Brut	Hülse: Aluminium* (2.5 % Mg) Blank	Corpo: Lega di alluminio* (2.5% Mg) Nessuna finitura	Cuerpo: Aluminio* (2.5% Mg) Natural
Stem: Aluminium alloy** Natural	Tige: Alliage d'aluminium** Brut	Dorn: Aluminium** Blank	Gambo: Lega di alluminio** Nessuna finitura	Vástago: Aluminio** Natural

\*: EN AW-5052, AlMg2.5

\*\* : EN AW-7075 AlZn5.5MgCu



ø	Drill diameter		Thread		ID	M	ø B	D <sub>1</sub>	T	D <sub>2</sub>	Tensile strength	Yield strength	Part No/ref	
	min.	max.	min.	max.										max.
6.4 (1/4")	1.50	3.50	6.7	6.9	12	13.7	13.4	2.7	12.2	3.4	5.0	2.67	02241-00812	
	2.80	4.80			13	15.0							6.0	02241-00813
	3.35	5.35			14	15.6							6.2	02241-00814
	4.80	6.80			15	17.0							6.5	02241-00815
	6.80	8.80			17	19.0							7.0	02241-00817
	8.80	10.80			19	21.0							7.0	02241-00819
	10.80	12.80			21	23.0							7.0	02241-00821

all dimensions in mm / en millimètres / alle Maße in mm / in millimetri / en milímetros





# Interlock® BAPI

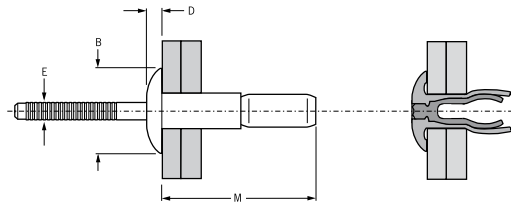
For installation information please refer to the tooling overview and manuals on our website [www.avdel-global.com](http://www.avdel-global.com).  
 Pour les conditions de pose, merci de vous référer à la description de l'outil et aux manuels disponibles sur notre site Web.  
 Angaben zur Verarbeitung entnehmen Sie bitte der Geräteübersicht und den Betriebsanleitungen auf unserer Website.  
 Per informazioni sull'installazione preghiamo consultare i manuali e la panoramica degli attrezzi sul nostro sito web.  
 Para ver información sobre máquinas de colocación, consulte nuestra página web, apartados visión general de máquinas y manuales.



English	Français	Deutsch	Italiano	Español
Protruding head	Tête bombée	Flachrundkopf	Testa tonda	Cabeza alomada
Body: Aluminium alloy* (5 % Mg) Natural	Corps: Alliage d'aluminium* (5% Mg) Brut	Hülse: Aluminium* (5 % Mg) Blank	Corpo: Lega di alluminio* (5% Mg) Nessuna finitura	Cuerpo: Aluminio* (5% Mg) Natural
Stem: Aluminium alloy** Natural	Tige: Alliage d'aluminium** Brut	Dorn: Aluminium** Blank	Gambo: Lega di alluminio** Nessuna finitura	Vástago: Aluminio** Natural

\*: BS 1473 5056 DIN 1725 AIMg5 Werkstoff 3.3555

\*\* : 7178



ø					M	B	D	E			Part No/ref
	min.	max.	min.	max.							
4.8 (3/16")	1.57	6.35	4.93	5.18	21.4	10.2	2.3	3.1	2.4	2.0	BAPI-06-04
	5.44	11.10			22.3						BAPI-06-07
	9.53	15.88			27.7						BAPI-06-10
	1.57	11.10			24.8						BAPI-E06-07
6.4 (1/4")	2.03	9.53	6.63	7.01	30.0	13.5	3.0	4.1	5.6	3.6	BAPI-08-06
	8.89	15.88			33.1						BAPI-08-10
	2.03	15.88			35.6						BAPI-E08-10

all dimensions in mm / en millimètres / alle Maße in mm / in millimetri / en milímetros

1) typical values / valeurs moyennes / typische Werte / Valori tipici / resistencias máximas recomendadas

## AVDEL

[www.avdel-global.com](http://www.avdel-global.com)

© 2010 Infastech

Interlock® is a trademark of Avdel UK Limited

05.2008

Data shown is subject to change without prior notice as a result of continuous product development and improvement policy.  
 Your local Avdel representative is at your disposal should you need to confirm latest information.

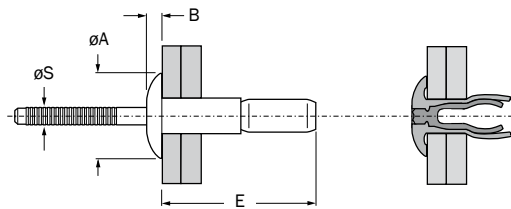
# Interlock® CCPI



For installation information please refer to the tooling overview and manuals on our website [www.avdel-global.com](http://www.avdel-global.com).  
 Pour les conditions de pose, merci de vous référer à la description de l'outil et aux manuels disponibles sur notre site Web.  
 Angaben zur Verarbeitung entnehmen Sie bitte der Geräteübersicht und den Betriebsanleitungen auf unserer Website.  
 Per informazioni sull'installazione preghiamo consultare i manuali e la panoramica degli attrezzi sul nostro sito web.  
 Para ver información sobre máquinas de colocación, consulte nuestra página web, apartados visión general de máquinas y manuales.

English	Français	Deutsch	Italiano	Español
Protruding head	Tête bombée	Flachrundkopf	Testa tonda	Cabeza alomada
Body: Stainless steel*	Corps: Inox*	Hülse: Edelstahl*	Corpo: Acciaio inox*	Cuerpo: Acero inoxidable*
Stem: Stainless steel**	Tige: Inox**	Dorn: Edelstahl**	Gambo: Acciaio inox**	Vástago: Acero inoxidable**

\*: 302 Series  
 \*\*: 316 Series



Ø	Ø		Ø		E	ØA	B	ØS	kN min.	kN min.	Part No/ref
	min.	max.	min.	max.							
4.8 (3/16")	1.57	6.35	4.93	5.18	21.39	10.16	2.29	3.10	5.78	4.44	CCPI-06-04
	1.57	11.10			25.48						CCPI-E06-07
6.4 (1/4")	2.03	9.53	6.63	7.01	28.42	13.46	2.97	4.11	10.67	8.22	CCPI-08-06
	2.03	11.10			30.00						CCPI-08-07
	2.03	15.88			36.35						CCPI-E08-10

all dimensions in mm / en millimètres / alle Maße in mm / in millimetri / en milímetros



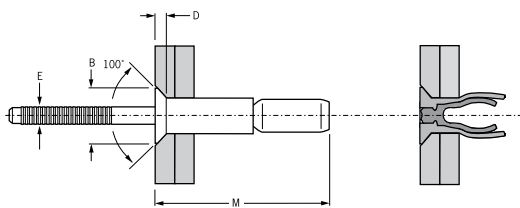
# Interlock® SSCI



For installation information please refer to the tooling overview and manuals on our website [www.avdel-global.com](http://www.avdel-global.com).  
 Pour les conditions de pose, merci de vous référer à la description de l'outil et aux manuels disponibles sur notre site Web.  
 Angaben zur Verarbeitung entnehmen Sie bitte der Geräteübersicht und den Betriebsanleitungen auf unserer Website.  
 Per informazioni sull'installazione preghiamo consultare i manuali e la panoramica degli attrezzi sul nostro sito web.  
 Para ver información sobre máquinas de colocación, consulte nuestra página web, apartados visión general de máquinas y manuales.

English	Français	Deutsch	Italiano	Español
Countersunk head	Tête fraisée	Senkkopf	Testa svasata	Cabeza avellanada
Body: Steel*	Corps: Acier*	Hülse: Stahl*	Corpo: Acciaio*	Cuerpo: Acero*
Zinc plated	Revêtement zingué	verzinkt	Zincati	Zincado
Clear trivalent chromated	Passivation claire trivalente	Klar chromatiert, Cr6-frei	Passivazione chiara trivalente	Passivado claro trivalente
Stem: Steel*	Tige: Acier*	Dorn: Stahl*	Gambo: Acciaio*	Vástago: Acero*
Zinc plated	Revêtement zingué	verzinkt	Zincati	Zincado
Clear trivalent chromated	Passivation claire trivalente	Klar chromatiert, Cr6-frei	Passivazione chiara trivalente	Passivado claro trivalente

\*: BS 3111 Type 1 SAE 1038



ø	Grip Length		Thread		M	B	D	E	Grip Strength	Grip Strength	Part No/ref
	min.	max.	min.	max.							
4.8 (3/16")	3.18	8.41	4.93	5.18	20.2	9.2	1.8	3.1	5.7	4.4	SSCI-06-06
6.4 (1/4")	4.32	12.07	6.63	7.01	28.4	11.4	2.0	4.1	10.6	8.2	SSCI-08-08

all dimensions in mm / en millimètres / alle Maße in mm / in millimetri / en milímetros

1)These grips are not defined in IFI-134 and therefore the strength values should be considered typical and not a minimum / Ces épaisseurs de serrage ne sont pas définies dans la IFI-134 par conséquent les valeurs de tenue doivent considérées comme moyenne et non minimum / Diese Klemmbereiche sind nicht in IFI-134 definiert, deshalb sollten die Festigkeitswerte als typisch und nicht minimum betrachtet werden / Questi spessori non sono definiti nella IFI-134 e pertanto i valori di resistenza debbono considerarsi come tipici, non come valori minimi / Estos espesores a remachar no están definidos en IFI-134 por lo que los valores de resistencias deben considerarse como típicos, no como valores mínimos.



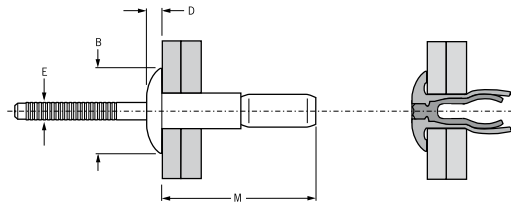
# Interlock® SSPI



For installation information please refer to the tooling overview and manuals on our website [www.avdel-global.com](http://www.avdel-global.com).  
 Pour les conditions de pose, merci de vous référer à la description de l'outil et aux manuels disponibles sur notre site Web.  
 Angaben zur Verarbeitung entnehmen Sie bitte der Geräteübersicht und den Betriebsanleitungen auf unserer Website.  
 Per informazioni sull'installazione preghiamo consultare i manuali e la panoramica degli attrezzi sul nostro sito web.  
 Para ver información sobre máquinas de colocación, consulte nuestra página web, apartados visión general de máquinas y manuales.

English	Français	Deutsch	Italiano	Español
Protruding head	Tête bombée	Flachrundkopf	Testa tonda	Cabeza alomada
Body: Steel* Zinc plated	Corps: Acier* Revêtement zingué	Hülse: Stahl* verzinkt	Corpo: Acciaio* Zincati	Cuerpo: Acero* Zincado
Stem: Steel* Zinc plated Clear trivalent chromated	Tige: Acier* Revêtement zingué Passivation claire trivalente	Dorn: Stahl* verzinkt Klar chromatiert, Cr6-frei	Gambo: Acciaio* Zincati Passivazione chiara trivalente	Vástago: Acero* Zincado Passivado claro trivalente

\*: BS 3111 Type 1 SAE 1038



ø					M	B	D	E			Part No/ref
	nom.	min.	max.	min.							
4.8 (3/16")	1.57	6.35	4.93	5.18	18.2	10.2	2.3	3.1	5.7	4.4	SSPI-06-04
	5.44	11.10			25.5						SSPI-06-07
	9.53	15.88			27.7						SSPI-06-10
	1.57	11.10			25.5						SSPI-E06-07
6.4 (1/4")	2.03	9.53	6.63	7.01	30.0	13.5	3.0	4.1	10.6	8.2	SSPI-08-06 <sup>2)</sup>
	8.89	15.88			36.4						SSPI-08-10
	2.03	15.88			36.4						SSPI-E08-10

all dimensions in mm / en millimètres / alle Maße in mm / in millimetri / en milímetros

1) typical values / valeurs moyennes / typische Werte / Valori tipici / resistencias máximas recomendadas

2) Deutsches Institut für Bautechnik (DIBt) Zulassung Nr. Z-14.1-4 Anlage 2-23

**AVDEL**

2010 Infastech, Rev. 08.2012

Interlock® is a trademark of Avdel UK Limited

Data shown is subject to change without prior notice as a result of continuous product development and improvement policy.  
 Your local Avdel representative is at your disposal should you need to confirm latest information.

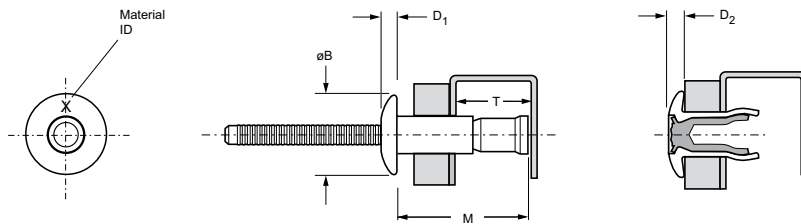
# Monobolt® 2711



For installation information please refer to the tooling overview and manuals on our website [www.avdel-global.com](http://www.avdel-global.com).  
 Pour les conditions de pose, merci de vous référer à la description de l'outil et aux manuels disponibles sur notre site Web.  
 Angaben zur Verarbeitung entnehmen Sie bitte der Geräteübersicht und den Betriebsanleitungen auf unserer Website.  
 Per informazioni sull'installazione preghiamo consultare i manuali e la panoramica degli attrezzi sul nostro sito web.  
 Para ver información sobre máquinas de colocación, consulte nuestra página web, apartados visión general de máquinas y manuales.

English	Français	Deutsch	Italiano	Español
Protruding head	Tête bombée	Flachrundkopf	Testa tonda	Cabeza alomada
Body: stainless steel* Natural	Corps: Inox* Brut	Hülse: Edelstahl* Unbehandelt	Corpo: Acciaio inox* Nessuna finitura	Cuerpo: Acero inoxidable* Natural
Stem: stainless steel* Natural	Tige: Inox* Brut	Dorn: Edelstahl* Unbehandelt	Gambo: Acciaio inox* Nessuna finitura	Vástago: Acero inoxidable* Natural

\*: AISI 304



Ø	Material ID		ØB		M	Ø B	D <sub>1</sub>	T	D <sub>2</sub>	kN <sup>1)</sup>	kN <sup>1)</sup>	Part No/ref
	min.	max.	min.	max.								
4.8 (3/16")	1.63	6.86	4.9	5.1	18.2	10.1	2.1	10.5	1.9	6.4	5.1	02711-00613
	1.63	11.10			24.5			13.5				02711-00617
6.4 (1/4")	2.03	9.53	6.6	7.0	23.7	13.4	2.9	12.2	2.7	11.7	10.4	02711-00817
	2.03	15.87			33.0			16.4				02711-00824 <sup>2)</sup>
10.0 (3/8")	3.04	15.88	9.95	10.4	36.2	20.3	4.1	22.3	4.0	26.1	19.4	02711-01228

all dimensions in mm / en millimètres / alle Maße in mm / in millimetri / en milímetros

1) typical values / valeurs moyennes / typische Werte / Valori tipici / resistencias máximas recomendadas

2) also available in 316 grade/A4 / aussi disponible dans Grade 316/A4 / auch in 316 grade/A4 erhältlich / anche disponibile in 316 grade/A4 / también disponible en 316 grade/A4



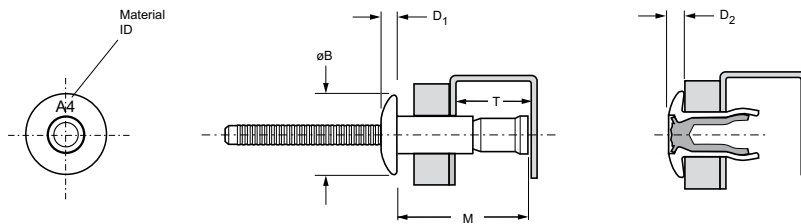
# Monobolt® 2717



For installation information please refer to the tooling overview and manuals on our website [www.avdel-global.com](http://www.avdel-global.com).  
 Pour les conditions de pose, merci de vous référer à la description de l'outil et aux manuels disponibles sur notre site Web.  
 Angaben zur Verarbeitung entnehmen Sie bitte der Geräteübersicht und den Betriebsanleitungen auf unserer Website.  
 Per informazioni sull'installazione preghiamo consultare i manuali e la panoramica degli attrezzi sul nostro sito web.  
 Para ver información sobre máquinas de colocación, consulte nuestra página web, apartados visión general de máquinas y manuales.

English	Français	Deutsch	Italiano	Español
Protruding head	Tête bombée	Flachrundkopf	Testa tonda	Cabeza alomada
Body: A4 stainless steel* Natural	Corps: A4 Inox* Brut	Hülse: A4 Edelstahl* Unbehandelt	Corpo: A4 Acciaio inox* Nessuna finitura	Cuerpo: A4 Acero inoxidable* Natural
Stem: A4 stainless steel* Natural	Tige: A4 Inox* Brut	Dorn: A4 Edelstahl* Unbehandelt	Gambo: A4 Acciaio inox* Nessuna finitura	Vástago: A4 Acero inoxidable* Natural

\*: 316 Grade



ø nom.	Material ID		Drill Bit		M max.	ø B max.	D <sub>1</sub> max.	T min.	D <sub>2</sub> max.	kN <sup>1)</sup>	kN <sup>1)</sup>	Part No/ref
	min.	max.	min.	max.								
4.8 (3/16")	1.63	6.86	4.9	5.1	18.2	10.1	2.1	10.5	1.9	6.45	5.11	02717-00613
	1.63	11.10			24.5			13.5				02717-00617
6.4 (1/4")	2.03	9.53	6.6	7.0	23.7	13.4	2.9	12.2	2.7	13.20	10.45	02717-00817
	2.03	15.87			33.0			16.4				02717-00824

all dimensions in mm / en millimètres / alle Maße in mm / in millimetri / en milímetros

1) typical values / valeurs moyennes / typische Werte / Valori tipici / resistencias máximas recomendadas

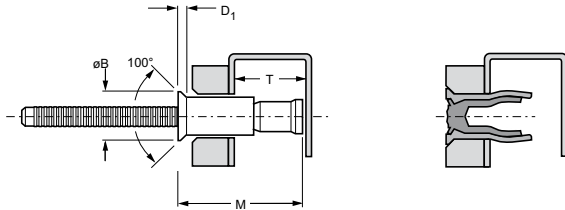
# Monobolt® 2721

For installation information please refer to the tooling overview and manuals on our website [www.avdel-global.com](http://www.avdel-global.com).  
 Pour les conditions de pose, merci de vous référer à la description de l'outil et aux manuels disponibles sur notre site Web.  
 Angaben zur Verarbeitung entnehmen Sie bitte der Geräteübersicht und den Betriebsanleitungen auf unserer Website.  
 Per informazioni sull'installazione preghiamo consultare i manuali e la panoramica degli attrezzi sul nostro sito web.  
 Para ver información sobre máquinas de colocación, consulte nuestra página web, apartados visión general de máquinas y manuales.



English	Français	Deutsch	Italiano	Español
Countersunk head	Tête fraisée	Senkkopf	Testa svasata	Cabeza avellanada
Body: austenitic stainless steel* Bright	Corps: Inox austénitique* Poli	Hülse: Edelstahl* Blank	Corpo: Acciaio inox austenitico* Lucido	Cuerpo: Acero inoxidable austenítico* Pulido
Stem: austenitic stainless steel* Natural	Tige: Inox austénitique* Brut	Dorn: Edelstahl* Unbehandelt	Gambo: Acciaio inox austenitico* Nessuna finitura	Vástago: Acero inoxidable austenítico* Natural

\*: AISI 304, modified by addition of 3 - 4 % copper



ø	[Cross-section diagram]		[Thread diagram]		M	ø B	D <sub>1</sub>	T	[Resistance diagram]	[Resistance diagram]	Part No/ref
	min.	max.	min.	max.							
4.8 (3/16")	3.17	8.41	4.9	5.1	20.0	8.25	2.2	10.41	6.4	5.1	02721-00615
6.4 (1/4")	3.17	12.07	6.6	7.0	26.4	10.03	2.4	12.19	11.7	10.4	02721-00821

all dimensions in mm / en millimètres / alle Maße in mm / in millimetri / en milímetros

1) typical values / valeurs moyennes / typische Werte / Valori tipici / resistencias máximas recomendadas

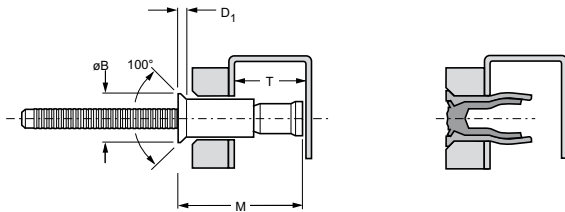


# Monobolt® 2761



For installation information please refer to the tooling overview and manuals on our website [www.avdel-global.com](http://www.avdel-global.com).  
 Pour les conditions de pose, merci de vous référer à la description de l'outil et aux manuels disponibles sur notre site Web.  
 Angaben zur Verarbeitung entnehmen Sie bitte der Geräteübersicht und den Betriebsanleitungen auf unserer Website.  
 Per informazioni sull'installazione preghiamo consultare i manuali e la panoramica degli attrezzi sul nostro sito web.  
 Para ver información sobre máquinas de colocación, consulte nuestra página web, apartados visión general de máquinas y manuales.

English	Français	Deutsch	Italiano	Español
Countersunk head	Tête fraisée	Senkkopf	Testa svasata	Cabeza avellanada
Body: steel	Corps: Acier	Hülse: Stahl	Corpo: Acciaio	Cuerpo: Acero
Zinc plated	Revêtement zingué	Verzinkt	Zincato	Zincado
Clear trivalent passivated	Passivation claire trivalente	Klar passiviert, Cr6-frei	Passivazione chiara trivalente	Pasivado claro trivalente
Stem: carbon boron steel	Tige: Acier	Dorn: Stahl	Gambo: Acciaio	Vástago: Acero
Zinc plated	Revêtement zingué	Verzinkt	Zincato	Zincado
Clear trivalent passivated	Passivation claire trivalente	Klar chromatiert, Cr6-frei	Passivazione chiara trivalente	Pasivado claro trivalente



ø	[Cross-section diagram]		[Thread diagram]		M	ø B	D <sub>1</sub>	T	[Torque diagram]	[Strength diagram]	Part No/ref
	min.	max.	min.	max.							
4.8 (3/16")	3.17	8.41	4.9	5.1	20.0	8.3	2.2	10.5	6.4	5.1	02761-00615
	3.17	12.22			26.3			13.5			02761-00619
6.4 (1/4")	3.17	12.07	6.6	7.0	26.4	10.1	2.4	12.2	11.7	10.4	02761-00821

all dimensions in mm / en millimètres / alle Maße in mm / in millimetri / en milímetros

1) typical values / valeurs moyennes / typische Werte / Valori tipici / resistencias máximas recomendadas



# Monobolt® 2764

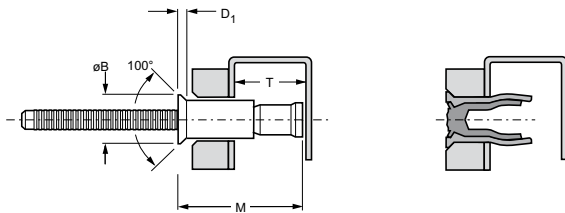
For installation information please refer to the tooling overview and manuals on our website [www.avdel-global.com](http://www.avdel-global.com).  
 Pour les conditions de pose, merci de vous référer à la description de l'outil et aux manuels disponibles sur notre site Web.  
 Angaben zur Verarbeitung entnehmen Sie bitte der Geräteübersicht und den Betriebsanleitungen auf unserer Website.  
 Per informazioni sull'installazione preghiamo consultare i manuali e la panoramica degli attrezzi sul nostro sito web.  
 Para ver información sobre máquinas de colocación, consulte nuestra página web, apartados visión general de máquinas y manuales.



English	Français	Deutsch	Italiano	Español
Countersunk head	Tête fraisée	Senkkopf	Testa svasata	Cabeza avellanada
Body: Aluminium alloy* (5 % Mg) Polished	Corps: Alliage d'aluminium* (5% Mg) Poli	Hülse: Aluminium* (5 % Mg) Poliert	Corpo: Lega di alluminio* (5% Mg) Lucido	Cuerpo: Aluminio* (5% Mg) Pulido
Stem: Aluminium alloy** Natural	Tige: Alliage d'aluminium** Brut	Dorn: Aluminium** Blank	Gambo: Lega di alluminio** Nessuna finitura	Vástago: Aluminio** Natural

\*: BS 1473 5056A DIN 1725 AlMg5 Werkstoff 3.3555

\*\* : BS 1473 2014A DIN 1725 AlCuSiMn Werkstoff 3.1255



ø	[Cross-section diagram]		[Thread diagram]		M	ø B	D <sub>1</sub>	T	[Torque diagram]	[Torque diagram]	Part No/ref
	min.	max.	min.	max.							
4.8 (3/16")	3.17	8.41	4.9	5.1	20.0	8.3	2.2	10.5	2.8	2.1	02764-00615
	3.17	12.22			26.3			13.5			02764-00619
6.4 (1/4")	3.17	12.07	6.6	7.0	27.2	10.1	2.4	13.0	6.0	4.2	02764-00821

all dimensions in mm / en millimètres / alle Maße in mm / in millimetri / en milímetros

1) typical values / valeurs moyennes / typische Werte / Valori tipici / resistencias máximas recomendadas

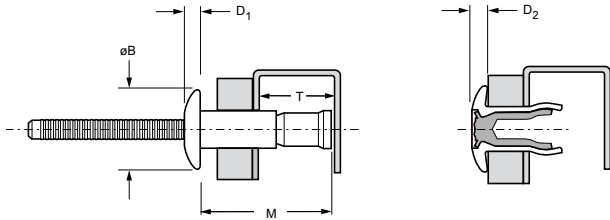


# Monobolt® 2771

For installation information please refer to the tooling overview and manuals on our website [www.avdel-global.com](http://www.avdel-global.com).  
 Pour les conditions de pose, merci de vous référer à la description de l'outil et aux manuels disponibles sur notre site Web.  
 Angaben zur Verarbeitung entnehmen Sie bitte der Geräteübersicht und den Betriebsanleitungen auf unserer Website.  
 Per informazioni sull'installazione preghiamo consultare i manuali e la panoramica degli attrezzi sul nostro sito web.  
 Para ver información sobre máquinas de colocación, consulte nuestra página web, apartados visión general de máquinas y manuales.



English	Français	Deutsch	Italiano	Español
Protruding head	Tête bombée	Flachrundkopf	Testa tonda	Cabeza alomada
Body: steel	Corps: Acier	Hülse: Stahl	Corpo: Acciaio	Cuerpo: Acero
Zinc plated	Revêtement zingué	Verzinkt	Zincato	Zincado
Clear trivalent passivated	Passivation claire trivalente	Klar passiviert, Cr6-frei	Passivazione chiara trivalente	Pasivado claro trivalente
Stem: carbon boron steel	Tige: Acier	Dorn: Stahl	Gambo: Acciaio	Vástago: Acero
Zinc plated	Revêtement zingué	Verzinkt	Zincato	Zincado
Clear trivalent passivated	Passivation claire trivalente	Klar chromatiert, Cr6-frei	Passivazione chiara trivalente	Pasivado claro trivalente



ø	Ø		Ø		M	ø B	D <sub>1</sub>	T	D <sub>2</sub>	kN <sup>1)</sup>	kN <sup>1)</sup>	Part No/ref
	min.	max.	min.	max.								
4.8 (3/16")	1.63	6.86	4.9	5.1	18.2	10.1	2.1	10.5	1.9	6.4	5.1	02771-00613
	1.63	11.10			24.5			13.5				02771-00617
6.4 (1/4")	2.03	9.53	6.6	7.0	23.7	13.4	2.9	12.2	2.7	11.7	10.4	02771-00817
	2.03	15.87			33.0			16.4				02771-00824
10.0 (3/8")	3.04	15.88	9.95	10.4	36.2	20.3	4.1	22.3	4.0	26.3	16.5	02771-01228 <sup>2)</sup>

all dimensions in mm / en millimètres / alle Maße in mm / in millimetri / en milímetros

1) typical values / valeurs moyennes / typische Werte / Valori tipici / resistencias máximas recomendadas

2) Deutsches Institut für Bautechnik (DIBt) Zulassung Nr. Z-14.1-4 Anlage 2-24

**AVDEL**

2010 Infastech, Rev. 02.2013

Monobolt® is a trademark of Avdel UK Limited

Data shown is subject to change without prior notice as a result of continuous product development and improvement policy.  
 Your local Avdel representative is at your disposal should you need to confirm latest information.

# Monobolt® 2774

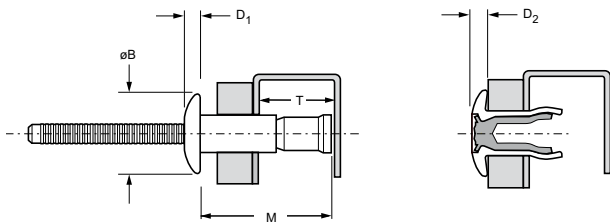


For installation information please refer to the tooling overview and manuals on our website [www.avdel-global.com](http://www.avdel-global.com).  
 Pour les conditions de pose, merci de vous référer à la description de l'outil et aux manuels disponibles sur notre site Web.  
 Angaben zur Verarbeitung entnehmen Sie bitte der Geräteübersicht und den Betriebsanleitungen auf unserer Website.  
 Per informazioni sull'installazione preghiamo consultare i manuali e la panoramica degli attrezzi sul nostro sito web.  
 Para ver información sobre máquinas de colocación, consulte nuestra página web, apartados visión general de máquinas y manuales.

English	Français	Deutsch	Italiano	Español
Protruding head	Tête bombée	Flachrundkopf	Testa tonda	Cabeza alomada
Body: Aluminium alloy* (5 % Mg) Polished	Corps: Alliage d'aluminium* (5% Mg) Poli	Hülse: Aluminium* (5 % Mg) Poliert	Corpo: Lega di alluminio* (5% Mg) Lucido	Cuerpo: Aluminio* (5% Mg) Pulido
Stem: Aluminium alloy** Natural	Tige: Alliage d'aluminium** Brut	Dorn: Aluminium** Blank	Gambo: Lega di alluminio** Nessuna finitura	Vástago: Aluminio** Natural

\*: BS 1473 5056A DIN 1725 AlMg5 Werkstoff 3.3555

\*\* : BS 1473 2014A DIN 1725 AlCuSiMn Werkstoff 3.1255



Ø	ØB		D1		M	Ø B	D <sub>1</sub>	T	D <sub>2</sub>	kN <sup>1)</sup>	kN <sup>1)</sup>	Part No/ref
	min.	max.	min.	max.								
4.8 (3/16")	1.63	6.86	4.9	5.1	18.4	10.1	2.1	10.5	1.9	3.0	2.2	02774-00613 02774-00617
	1.63	11.10			24.1			13.0				
6.4 (1/4")	2.03	9.53	6.6	7.0	24.6	13.4	2.9	13.0	2.7	6.0	4.2	02774-00817 02774-00824
	2.03	15.87			34.7			18.1				
10.0 (3/8")	3.04	15.88	9.95	10.4	36.2	20.3	4.1	22.3	4.0	12.6	9.3	02774-01228

all dimensions in mm / en millimètres / alle Maße in mm / in millimetri / en milímetros

1) typical values / valeurs moyennes / typische Werte / Valori tipici / resistencias máximas recomendadas

**AVDEL**

[www.avdel-global.com](http://www.avdel-global.com)

© 2010 Infastech

Monobolt® is a trademark of Avdel UK Limited

11.2009

Data shown is subject to change without prior notice as a result of continuous product development and improvement policy.  
 Your local Avdel representative is at your disposal should you need to confirm latest information.